

A. USB Portable Storage Device (PSD) Encryption Procedure

After installation of McAfee Endpoint Encryption software to your Windows PC, you can perform encryption to the USB PSD.

- I) When the USB PSD is inserted into the computer, you will see the pop-up message.



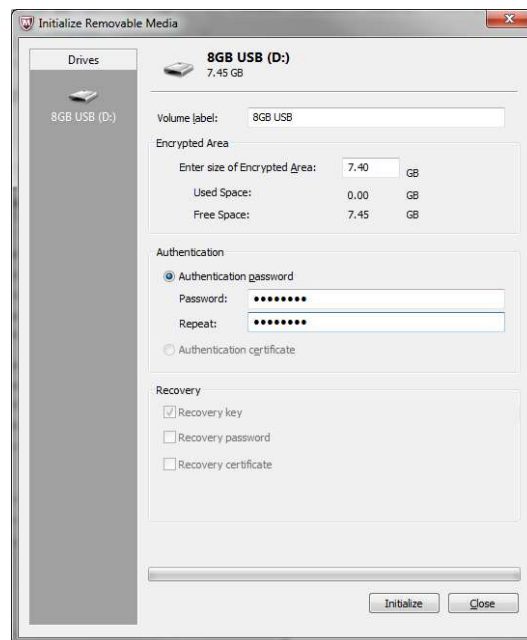
- II) Click "**Yes**" to continue the encryption process.
Or click "**No**" to stop the encryption process. The USB PSD will become read only because the PC will not allow writing any data to an unencrypted USB PSD.

NOTE:

1. Initializing a USB PSD by the DLP software with data is not recommended. Data stored on USB PSD before DLP software initialization will not be protected. If your USB PSD inserted contains data, click "**No**" to quit.
2. DLP encrypted USB PSD is supported on Mac OS X of the following versions
 - Sierra 10.12.x
 - El Capitan 10.11.x
 - Yosemite 10.10.x

Enter “**Volume label**”, size of the Encrypted Area and password for the device. The maximum length of characters allowed for volume label is **11** characters.

The size of encrypted area should be the free space available less 0.05GB. For example, if the free space shown is 7.45GB, the size of Encrypted Area to be entered should be 7.40GB.



Note:

1. Suggested format of the volume label of the encrypted USB PSD

- **DDMMMUUXNN**
- **DD**: Department/Office/Work Unit code
- **MM**: Machine code
- **UU**: User code
- **X**: Usage
- **NN**: Number

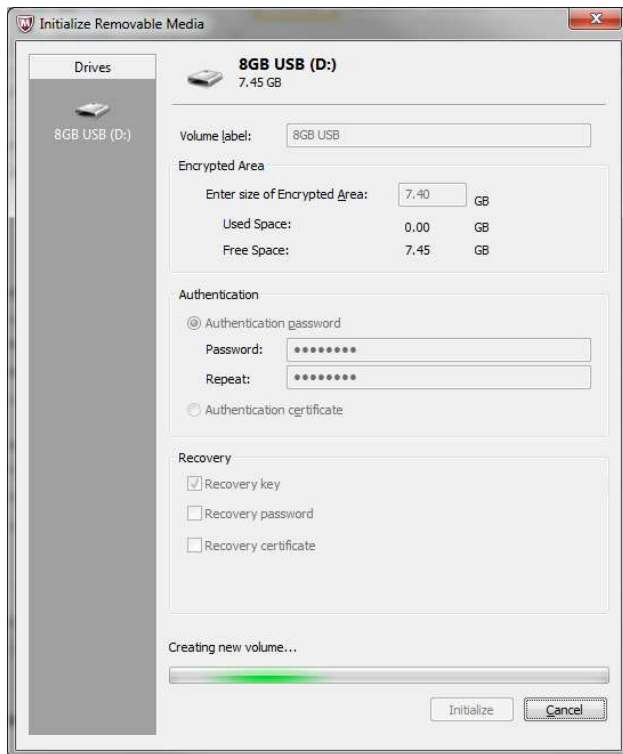
The suggestion is for ease to differentiate the USB PSD, password recovery and use of password

- Guideline for volume name of USB PSD
 - **O**wn use : For personal use only
 - **G**roup use : For private group use only
 - **P**ublic use : For public group use

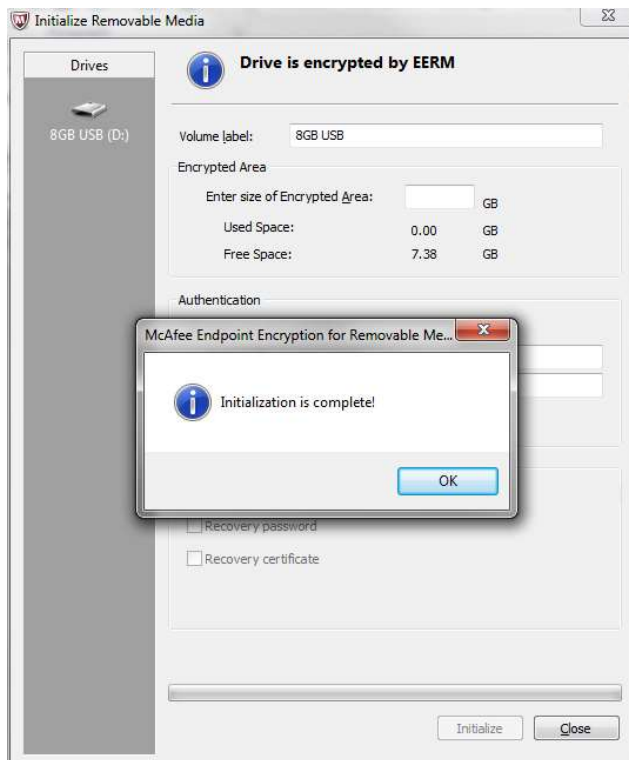
- Example : ITSSTKJLO01

The USB PSD is encrypted by machine “STK” and for John Lam’s own use in “ITS” department.

III) Click “**Initialize**” and wait until the encryption is completed.



- IV) Click **“Yes”** to continue and complete the initialization.



- V) The USB PSD is encrypted now and ready for read/write access.



B. Encrypted USB PSD Access Procedure

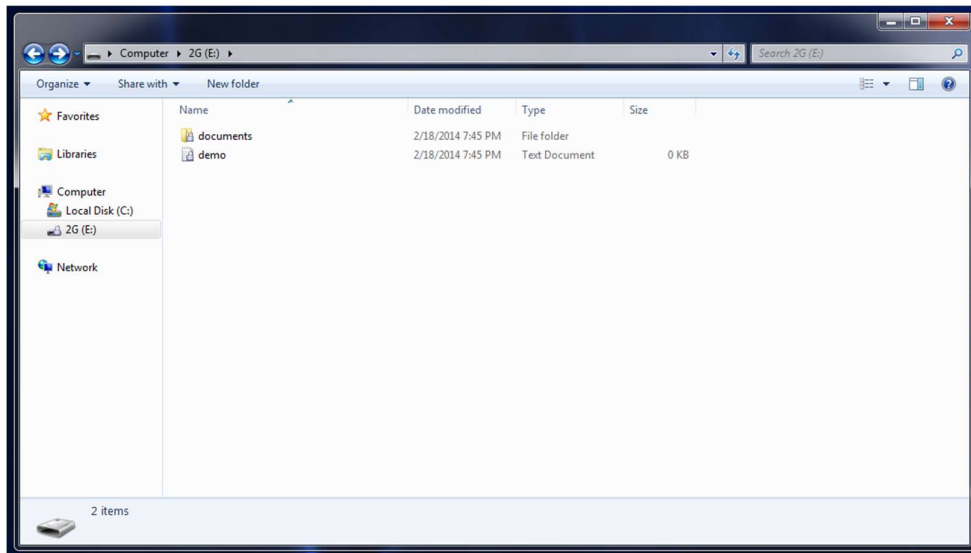
1. On the computer you perform encryption to the USB PSD (in the same login profile)
 - I) Insert the encrypted USB PSD into the computer.
 - II) You can access the files inside USB PSD without password authentication.
2. On another PC with DLP data encryption software installed or on the computer you perform encryption to the USB PSD (but in different login profile)
 - I) Insert the encrypted USB PSD into the computer.
 - III) Type the password in the pop-up message box.



- IV) If no pop-up message appears because the "auto-run" feature is disabled for USB device for your computer, run "MfeEERM.exe" manually from the USB PSD.



- V) You can then access the files as usual.



3. On a computer without DLP data encryption software (Windows platforms and Mac OS X systems)

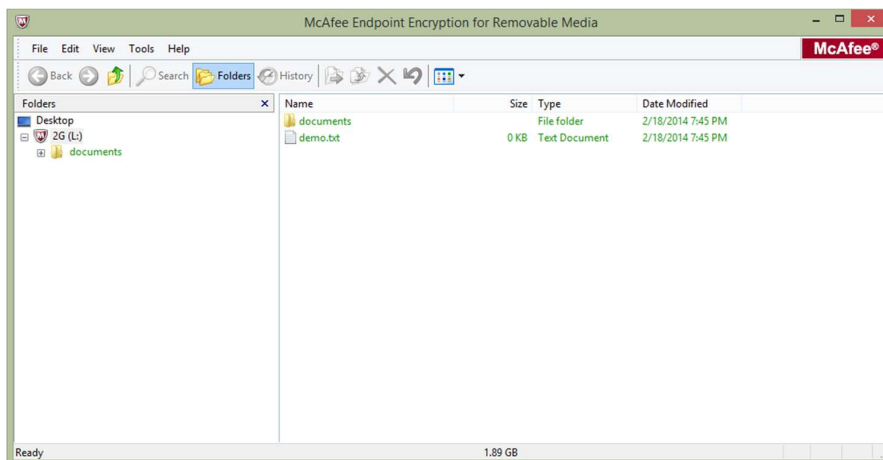
- I) Insert the encrypted USB PSD into the computer.
- II) Run “MfeEERM.exe” manually from the USB portable storage device.



- III) Type the password in the pop-up message box.



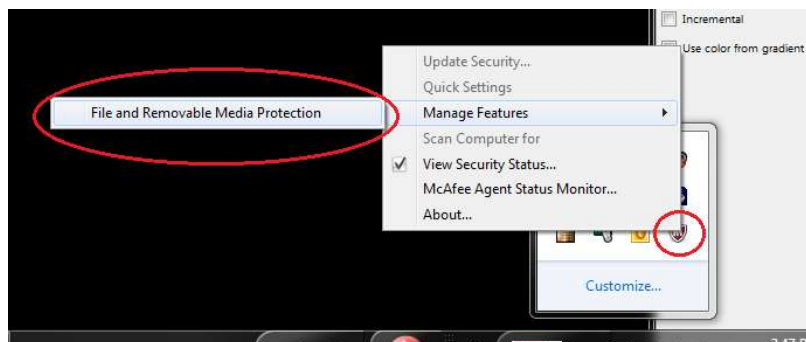
- IV) You can use the McAfee Endpoint Encryption Software to drag and drop files to and from USB PSD.



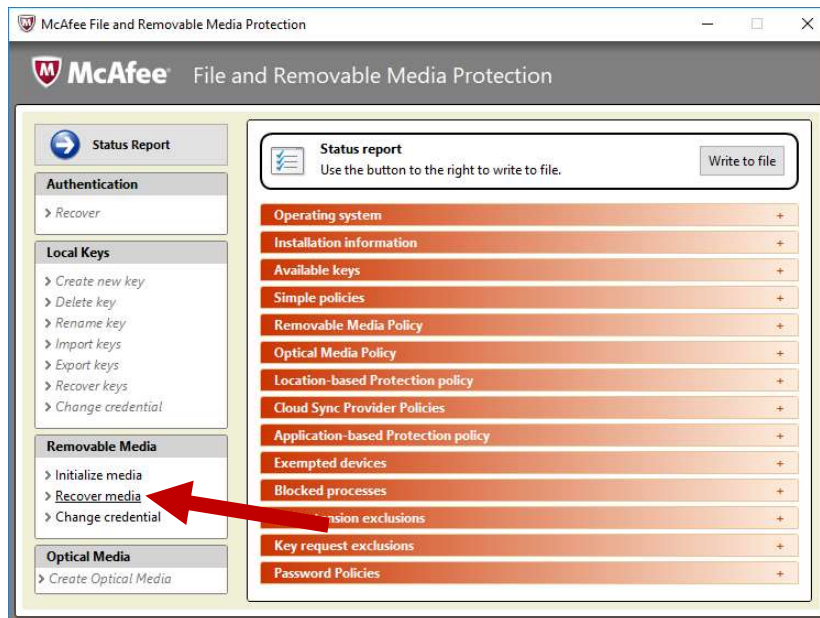
C. Encrypted USB PSD Password Recovery

NOTES: Perform the following procedures on the computer you perform encryption to the USB PSD.

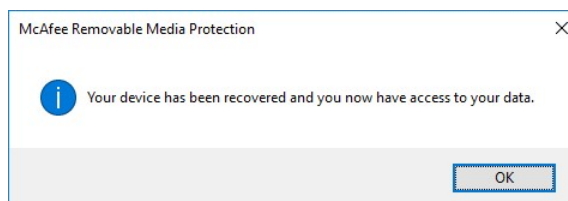
- I) Insert the encrypted USB PSD into the computer.
- II) Select McAfee icon on Windows toolbar. Right-click the mouse and select Manage Features > File and Removable Media Protection.



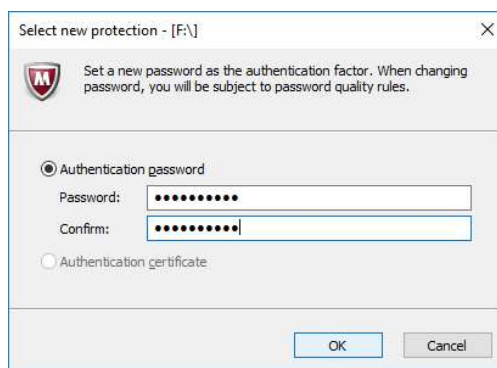
III) Select **Recover media**



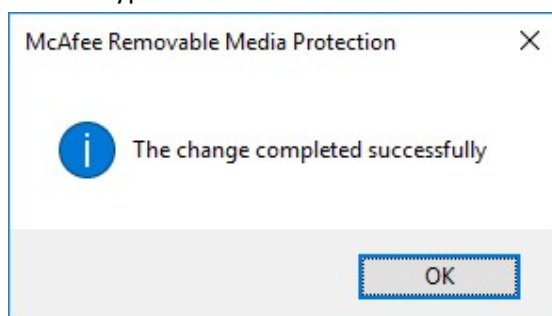
IV) Click **“OK”** to continue



V) Type the new password twice and click **“OK”**.



- VI) The encrypted USB PSD can now be used with the new password.

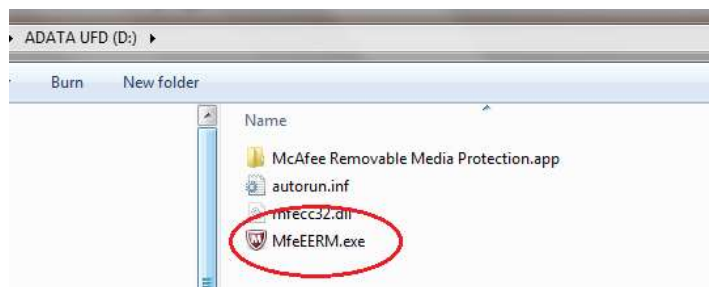


D. Change protection password for the USB PSD on a Computer (Windows and Mac System) without DLP Data Encryption Software

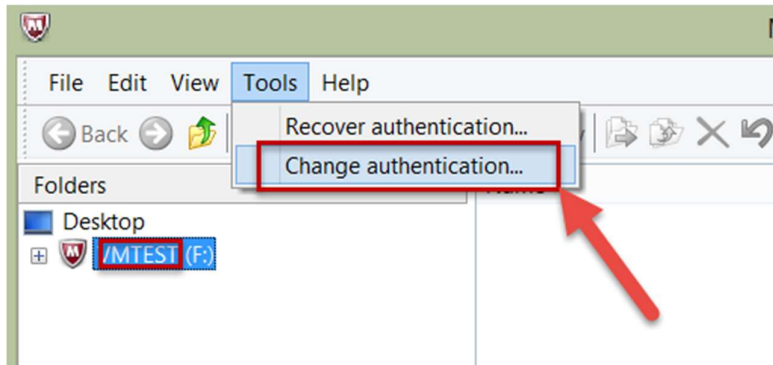
- I) Insert the encrypted USB PSD into the computer and type in the password in the pop-up message box for authentication.



- II) If there is no pop-up message box appeared, start the DLP software client manually by double click the executable file "MfeEERM.exe" on the USB PSD.



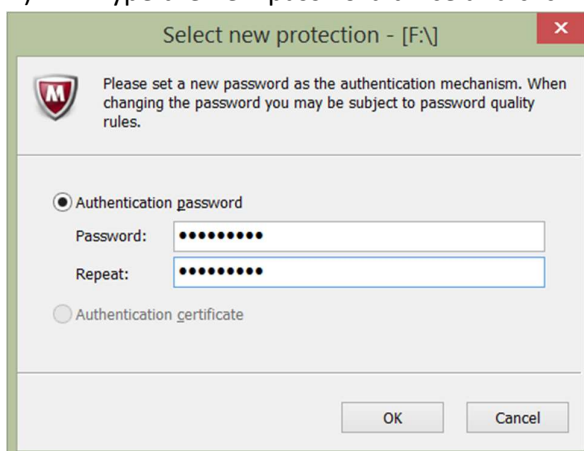
III) From the menu, click **“Tools”**> **“Change authentication”**.



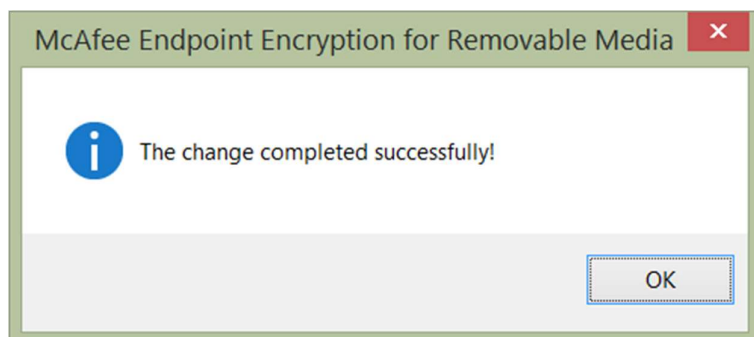
IV) Type the current password for verification.



V) Type the new password twice and click **“OK”**.

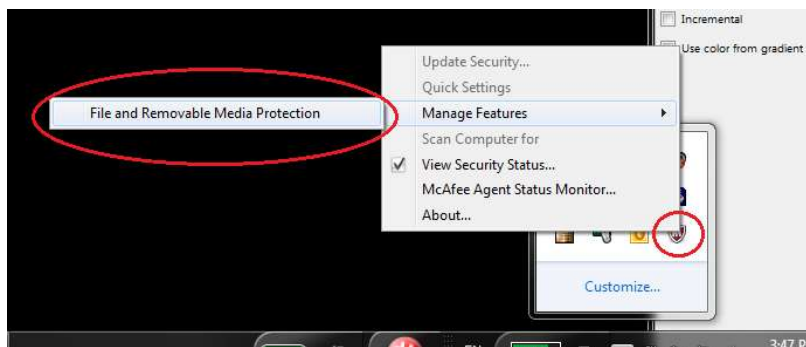


VI) Click “**OK**” to complete.

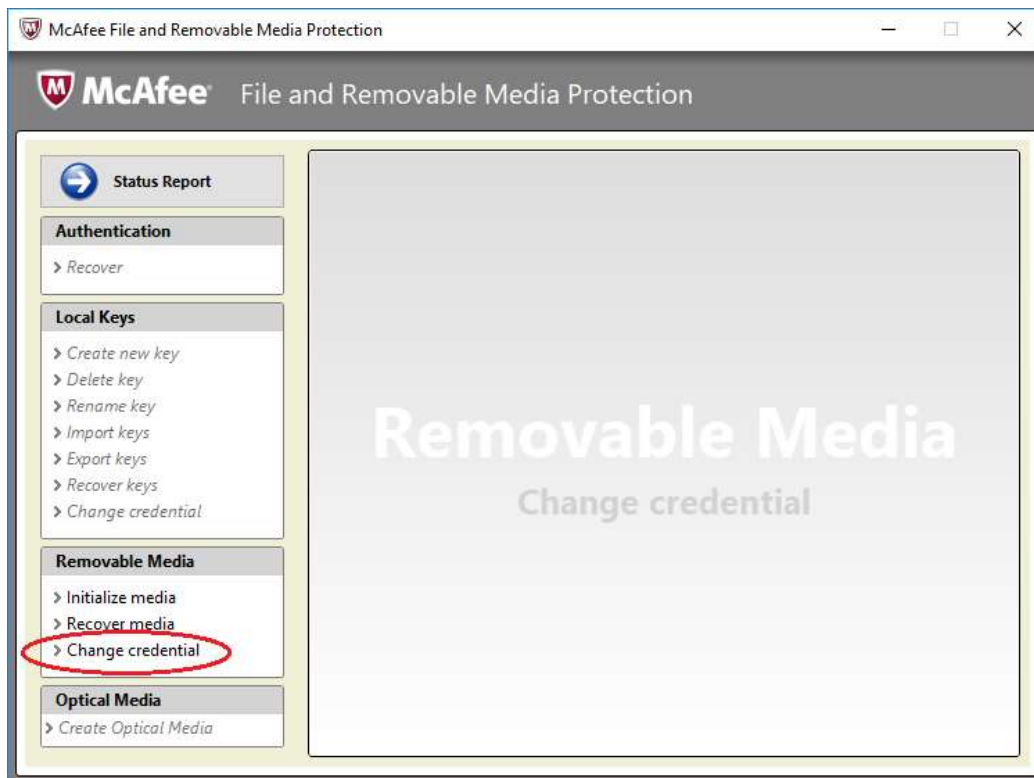


E. Change protection password for the USB PSD on a Computer with DLP Data Encryption Software

1. Insert the encrypted USB PSD into the computer.
2. If you are not working on a DLP PC which you perform encryption to the USB PSD, or if you are working on a DLP PC which you perform encryption to the USB PSD but in different login profile, then it is required to type in password to access the USB PSD.
3. Right click the McAfee Shield icon in the toolbar of Windows. Select **“Managed Features”** -> **“File and Removable Media Protection”**.



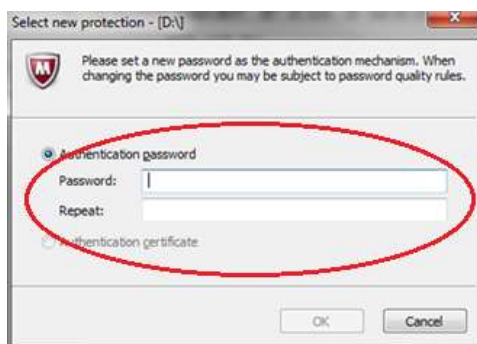
4. Use the “**Change credential**” function to change the password of the encrypted USB PSD.



5. A pop-up message box will appear for input of password. Input the current password then click “**OK**”.



6. A pop-up message box will appear after you input the correct password. Input the new password and repeat to confirm. Click “**OK**” to proceed.



7. A pop-up message will appear to confirm the completion of change.



--- End ---